

An Introduction to the Linux Command Line

Matt Gitzendanner *magitz@ufl.edu*



UF | Information Technology

OneIT for the #GatorGood

Don't be intimidated!

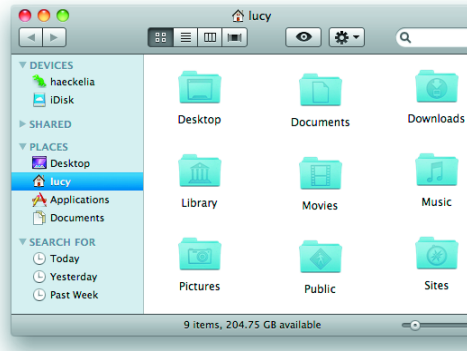


UF | Information Technology

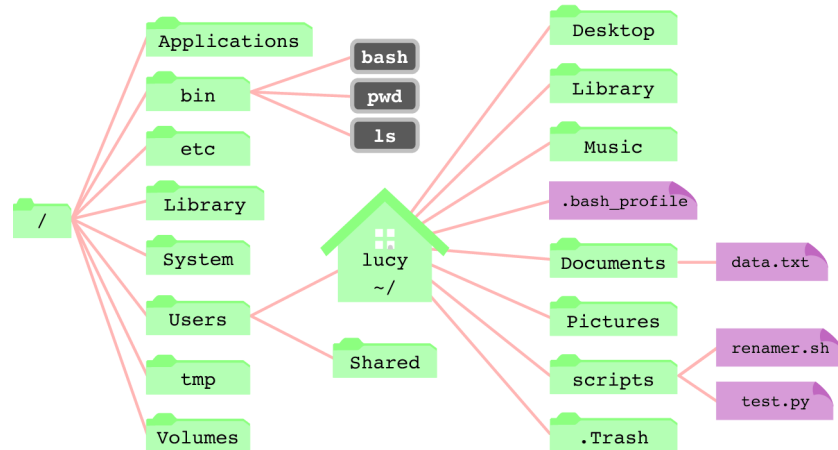
OneIT for the #GatorGood

File system

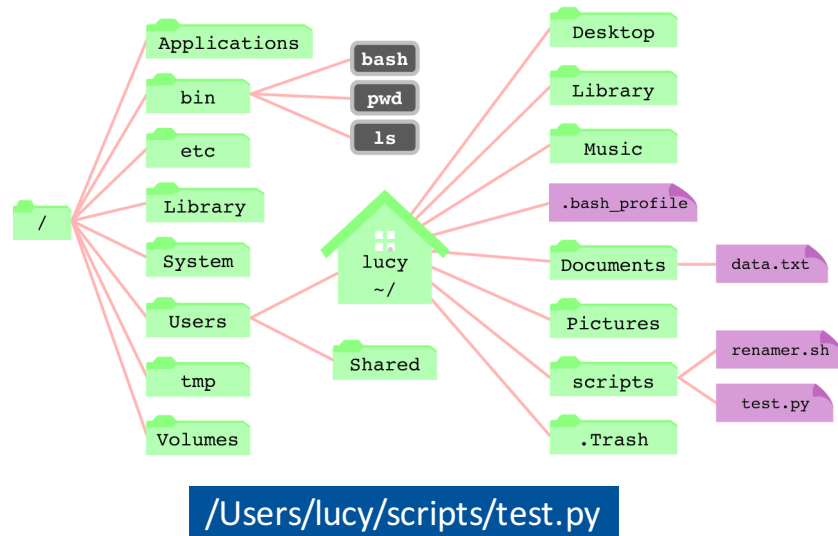
```
Terminal — bash — 80x24
Last login: Mon Dec 8 21:44:54 on ttys003
host:~ lucy$ ls
Desktop      Downloads    Movies       Pictures     Sites
Documents    Library      Music        Public
```



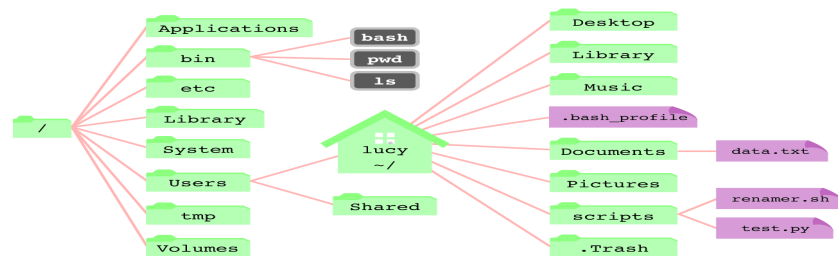
File system



File system: Paths



File system: ls & cd



```
[magitz@gator1 scripts]$ ls
renamer.sh  test.py
[magitz@gator1 scripts]$ cd ../Documents/
[magitz@gator1 Documents]$ ls
data.txt
[magitz@gator1 Documents]$ █
```

The command prompt

```

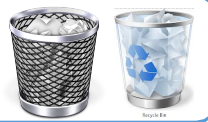
[usermagitz@hostgator1 currentscripts]$ ls
renamer.sh test.py
[usermagitz@hostgator1 currentscripts]$ cd ../Documents/
[usermagitz@hostgator1 Documents]$ ls
data.txt
[usermagitz@hostgator1 Documents]$ █

```

File system: Basic commands

- pwd: Present Working Directory
- ls: List--show contents of directory
- cd: Change Directory
- mkdir: Make directory
- rm: Remove a file (rm -r for directories)
- rmdir: Remove directory

**There is no
trashcan!
(or backups)**



- cp: Copy a file: cp data.txt ../analysis/
- mv: Move a file: mv data.txt ../analysis/

Command arguments

- Modify how a command works
 - Used from the most basic command like `ls`, to most applications you will run

```
[magitz@gator1 scripts]$ ls
renamer.sh test.py
[magitz@gator1 scripts]$ ls -l
total 0
-rw-rw-r-- 1 magitz ufhpc 0 Jul 25 12:22 renamer.sh
-rw-rw-r-- 1 magitz ufhpc 0 Jul 25 12:22 test.py
[magitz@gator1 scripts]$ ls -la
total 8
drwxrwxr-x 2 magitz ufhpc 4096 Jul 25 12:22 .
drwxrwxr-x 4 magitz ufhpc 4096 Jul 25 12:25 ..
-rw-rw-r-- 1 magitz ufhpc 0 Jul 25 12:22 renamer.sh
-rw-rw-r-- 1 magitz ufhpc 0 Jul 25 12:22 test.py
[magitz@gator1 scripts]$ █
```

Linux permissions

Indicates a directory (d) or a file (-)

Group (set of users)

drwxrwxrwx

User (owner) permissions

Other users (everyone else)

- Change with: `chmod o-rwx file`
 - `ls -l` shows permission details

```
-rw-rw-r-- 1 magitz ufhpc 0 Jul 25 12:22 renamer.sh
  u  g  o      user  group
```

Viewing text files

- `more` and `less`: show contents of a file, `less` has more features (search, scroll up, etc.)
- `head`: show start of file (10 lines by default)
 - `head -n 20 file.txt`
- `tail`: show end of file (10 lines by default)
- `grep`: search for text in file
 - `grep Gainesville weather.txt`
- Text editors: `nano`, `vi`, `vim`, `emacs`, etc.

Redirecting output

- The “>” can be used to redirect output:
 - `grep GNV weather.txt > Gainesville.txt`
 - `ls -l > file_list.txt`
- **Caution:** > will overwrite the specified file!
- You can append to a file with “>>”

Connecting commands

- The pipe, “|”, can be used to send, or pipe, the output of one command to the input of another:
 - `ls -l | grep Jun > files_modified_in_June`

Tip: Don't use spaces in file or directory names

UF | Information Technology

OneIT for the #GatorGood

Tools

ssh client to connect to
hpg2.rc.ufl.edu



e.g.: Terminal, MobaXterm

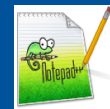
SFTP client to move files
to / from your computer
Host: **sftp.rc.ufl.edu**



e.g.: Cyberduck, FileZilla

Text editor to prepare files

Especially on Windows, be sure to convert DOS
line breaks to Unix, and *don't use Word*
Both have SFTP built in



e.g.: TextWrangler, Notepad++

SSH Clients

```

ufit-rc-matt:~ matt$ ssh magitz@hpg2.rc.ufl.edu
magitz@hpg2.rc.ufl.edu's password:
Last login: Thu May 26 11:17:26 2016 from 10.243.21.61
Welcome to UF Research Computing

Do not run interactive jobs on the login nodes. If you need to
run an interactive job, please use the interactive/test nodes.

  http://wiki.rc.ufl.edu/doc/Test_Nodes

UF Research Computing account policies are available at
the following URL.

  http://www.rc.ufl.edu/about/policies/account

  _____
  UFIT Policy Notice
  _____

The user understands and acknowledges that the computer and the

```



Mac/Linux: Terminal



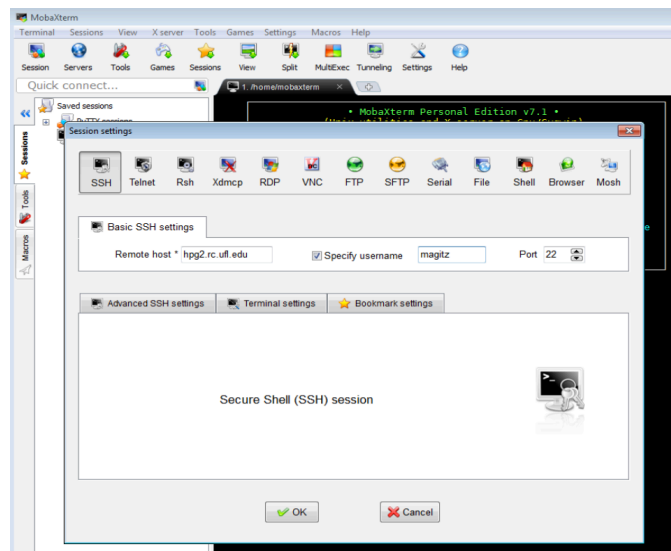
Windows:
MobaXterm or PuTTY

ssh user@hpg2.rc.ufl.edu

UF | Information Technology

OneIT for the #GatorGood

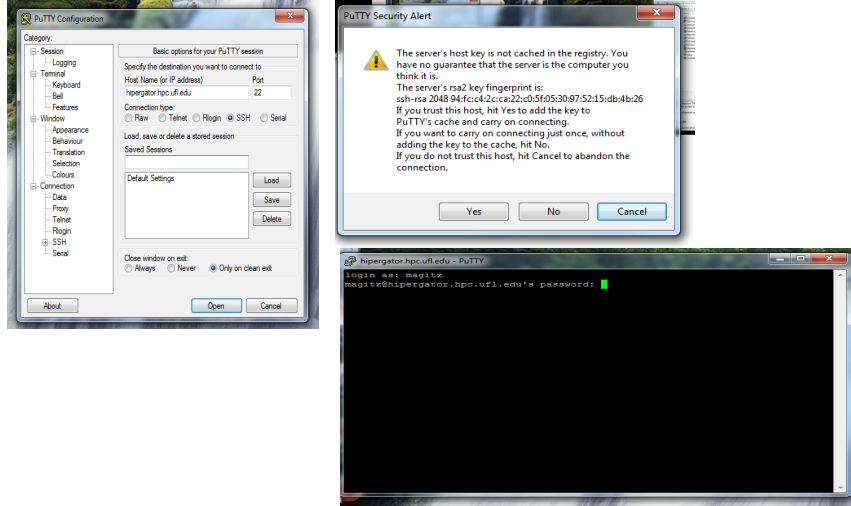
MobaXterm



UF | Information Technology

OneIT for the #GatorGood

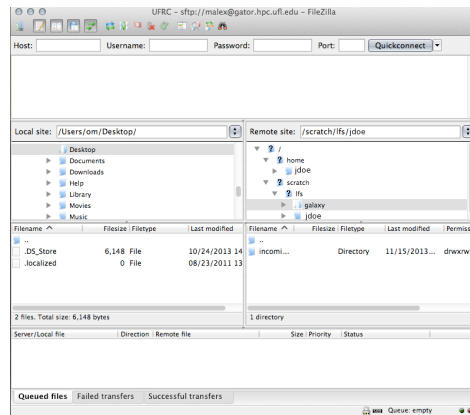
PuTTY



UF | Information Technology

OneIT for the #GatorGood

FileZilla



Host:
sftp.rc.ufl.edu

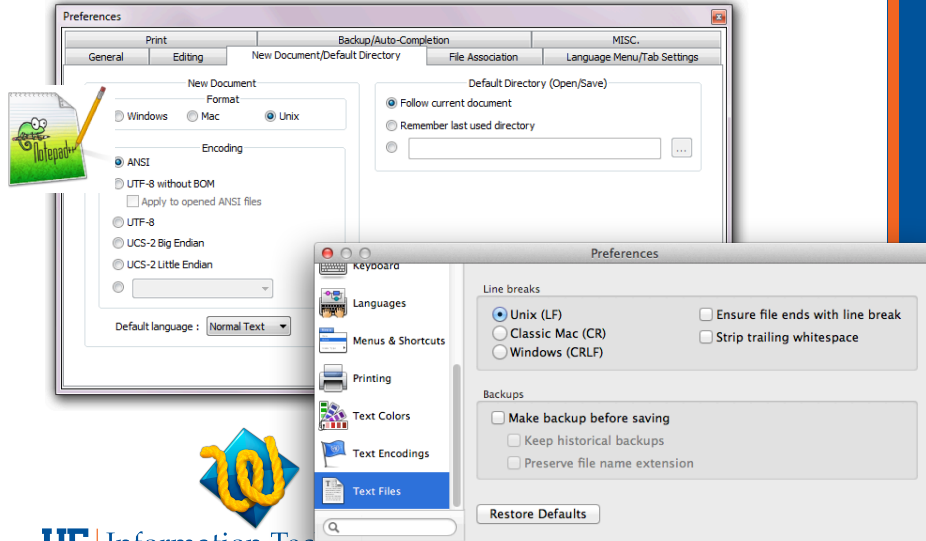
*Do not use hpg2 login
serve for data
transfer*

Tutorial at: <http://wiki.rc.ufl.edu/doc/FileZilla>

UF | Information Technology

OneIT for the #GatorGood

Unix line breaks

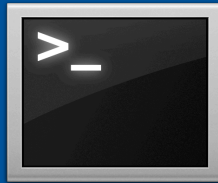


UF | Information Technology

OneIT for the #GatorGood

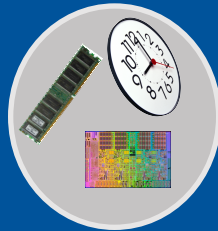
Cluster basics

User interaction



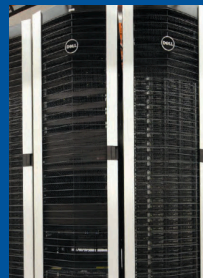
Login node
(Head node)

Scheduler



Tell the scheduler what you want to do

Compute resources



Your job runs on the cluster

UF | Information Technology

OneIT for the #GatorGood

Learn by doing...

Handouts also available on Wiki

An Introduction to Working in the Linux Command Line

January 28th, 2013
Note: Do not attempt to copy/paste out of this document. Commands will likely not work!

- Some software you will need
- file paths (directories or folders) /, /home/username/, /usr/bin/ls, /etc/passwd, /etc/hosts, /etc/passwd, /etc/passwd, /etc/passwd, /etc/passwd

- Getting around in Linux
- file paths (directories or folders) /, /home/username/, /usr/bin/ls, /etc/passwd, /etc/hosts, /etc/passwd, /etc/passwd, /etc/passwd

- Making things work
- Tab completion: type part of a path and hit tab-key, shell will auto-complete for you

- Learning by doing
1. Where are you when you login? pwd
2. What files are there? ls
3. Make a directory mkdir test_dir
4. What files are there? ls

Unix/Linux Command Reference FOSSWire.com
Table with columns for File Commands and System Tools, listing various commands like ls, cp, mv, rm, find, etc.



Satisfaction Survey

training.it.ufl.edu

UF NEWS CALENDAR OFFICES & SERVICES DIRECTORY GIVING UF HEALTH UF IFAS Welcome to UF

UF UFIT Training UNIVERSITY OF FLORIDA TRAINING CANVAS BASICS SERVICES CALENDAR
UF Computing Help Desk Contact Us
Satisfaction Survey

UFIT Training provides an extensive catalog of

NEW AND UPDATED



Next Week:

- Open Q&A session
 - 11:00am
 - NPB 2205

Support

- Support requests



- [Web page](#) and [wiki](#)

HiPerGator 2.0 Information

- [HiPerGator 2.0 Information](#)
- [SLURM Documentation](#)
- [Moab \(PBS\) to SLURM command reference](#)