

The Linux/Unix Shell - An Introduction

Matt Gitzendanner: magitz@ufl.edu
Alex Moskalenko: om@hpc.ufl.edu

9/17/12

UF Information Technology

www.it.ufl.edu

Tools

ssh client to connect to
`submit.hpc.ufl.edu`



e.g.: Terminal, PuTTY

SFTP client to move files
to / from your computer



e.g.: Cyberduck, FileZilla

Text editor to prepare files
Especially on Windows, be sure to convert DOS
line breaks to Unix, and *don't use Word*
Both have SFTP built in

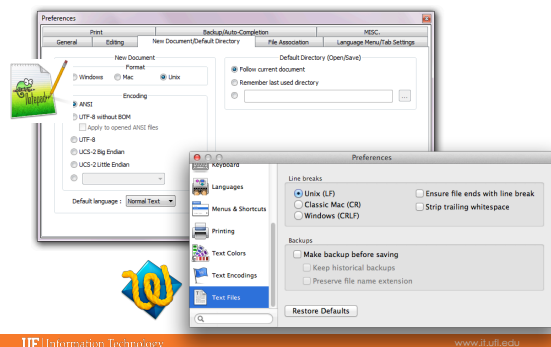


e.g.: TextWrangler, Notepad++

UF Information Technology

www.it.ufl.edu

Unix line breaks

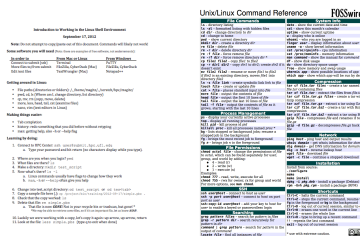


UF Information Technology

www.it.ufl.edu

Learn by doing...

Handouts also available on Wiki



UF Information Technology

www.it.ufl.edu

Training Schedule

- ✓ Aug 28: Intro to UFHPC, getting started
- ✓ Sept 10: Modules, RHEL6 Transition, User Q&A
- ✓ Sept 17: The Linux/Unix Shell - An Introduction
- ▶ Sept 24: Running Jobs, Submission Scripts, Modules
- ▶ Oct 1: Galaxy Overview, The Basics
- ▶ Oct 8: NGS Data Techniques: General Methods and Tools
- ▶ Oct 15: NGS Data Techniques: Reference Based Mapping
- ▶ Oct 22: NGS Data Techniques: de Novo Assembly
- ▶ Oct 29: Phylogenetic Analyses
- ▶ Nov 5: Multiprocessing at the HPC Center
- ▶ Nov 12: Using Git and CMake to Organize and Drive Data Analysis Pipelines
- ▶ Nov 19: Introduction to GPU Nodes
- ▶ Nov 29: NGS Data Techniques: RNA-Seq
- ▶ Dec 3: NGS Data Techniques: Alternative Splicing Analysis

UF Information Technology

www.it.ufl.edu