

An Introduction to the Linux Command Line

Matt Gitzendanner: magitz@ufl.edu

5/21/13

UF Information Technology

www.it.ufl.edu

Tools

ssh client to connect to
submit.hpc.ufl.edu



e.g.: Terminal, PuTTY

SFTP client to move files
to/from your computer



e.g.: Cyberduck, FileZilla

Text editor to prepare files
Especially on Windows, be sure to convert DOS
line breaks to Unix, and *don't* use Word
Both have SFTP built in

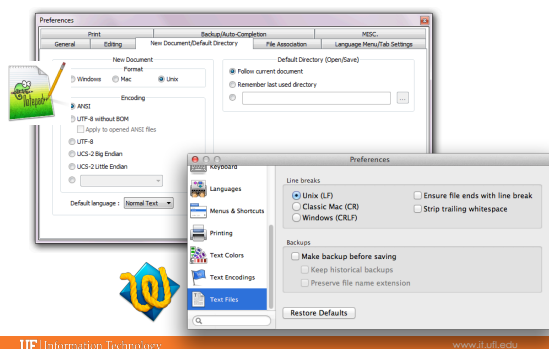


e.g.: TextWrangler, Notepad++

UF Information Technology

www.it.ufl.edu

Unix line breaks



UF Information Technology

www.it.ufl.edu

Cluster basics

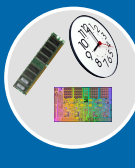
User
interaction

Galaxy



Login node
(Head node)

Scheduler



Tell the
scheduler
what you
want to do

Compute
resources



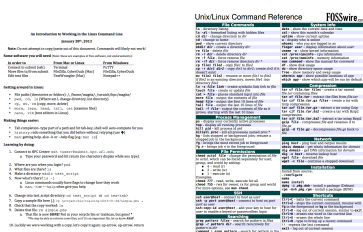
Your job
runs on the
cluster

UF Information Technology

www.it.ufl.edu

Learn by doing...

Handouts also available on Wiki



UF Information Technology

www.it.ufl.edu

UF Research Computing

- ▶ Help Request Tickets
 - <https://support.hpc.ufl.edu>
 - For any kind of question or help requests
 - Searchable database of solutions
- ▶ <http://wiki.hpc.ufl.edu>
 - Documents on hardware and software resources
 - Various user guides
 - Many sample submission scripts



UF Information Technology

www.it.ufl.edu